



**EAST  
BARNBY**



**REAL ADVENTURE      REAL FUN      REAL EDUCATION**



**North Yorkshire  
Outdoor Learning Service**

*in the real outdoors*



Some questions you may have we hope to address

Why?

Where?

What?

Worries?



# What is Outdoor Learning?

We combine lots of fun with life affirming experiences, confidence building, motivation and positivity as well as educational skills and social learning



Click to move on



# 📍 What is Outdoor Learning?



*We call it....*

Motivational learning in inspirational environments





Welcome to...



# EAST BARNBY



Click to  
move on

Built in 1954 for the RAF and set in the beautiful North York Moors countryside, near to the Whitby Coast

The ideal location for your outdoor learning residential

The Sea, rivers, crags, forests and hills; the Yorkshire coast on our doorstep.





# Your accommodation



Click to  
move on

Connected  
teacher  
bedrooms

Security  
alarmed  
doors

Single or  
bunk beds

Bedding  
provided;  
learn to make  
a bed!

Drying  
rooms for  
wet kit



All dorms have  
showers and  
toilets in the  
same building


Accessible rooms





# Facilities

- Shared dining room
- Games room
- Common room
- Tuck shop
- Classroom spaces with projectors and screens
- Camp fires
- Large outdoor spaces

  
Click to  
move on

# How will you learn?

These are the foundations of how you will learn on your course. Your individual aims and objectives will build on these aspects.



Environmental  
Awareness



Personal Growth



Social Skills



Click to  
move on



# How will you learn?

These are the foundations of how you will learn on your course. Your individual aims and objectives will build on these aspects.

- ✓ Connect with nature
- ✓ Understand the natural world
- ✓ Learn how to have minimal impact

Environmental  
Awareness



Personal Growth



Social Skills



# How will you learn?

These are the foundations of how you will learn on your course. Your individual aims and objectives will build on these aspects.

- ✓ Connect with nature
- ✓ Understand the natural world
- ✓ Learn how to have minimal impact

Environmental  
Awareness

- ✓ Enjoyment and confidence
- ✓ Learning and skills
- ✓ Broaden your horizons

Personal Growth



Social Skills



# How will you learn?

These are the foundations of how you will learn on your course. Your individual aims and objectives will build on these aspects.

- ✓ Connect with nature
- ✓ Understand the natural world
- ✓ Learn how to have minimal impact


Environmental  
Awareness

- ✓ Enjoyment and confidence
- ✓ Learning and skills
- ✓ Broaden your horizons

Personal Growth

- ✓ Social awareness
- ✓ Communication and problem solving
- ✓ Teamwork and leadership

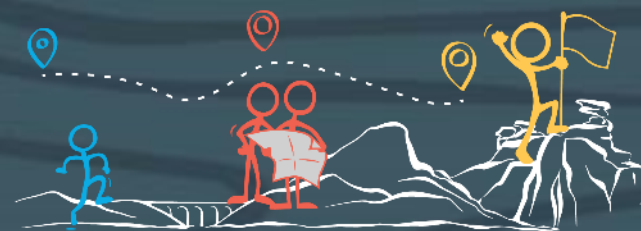
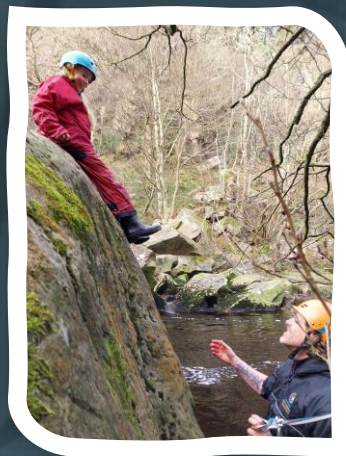
Social Skills

  
Click to  
move on





# 📍 What sort of activities can you do?



📍 What sort of activities can you do?





What sort of activities can you do?



Bushcraft



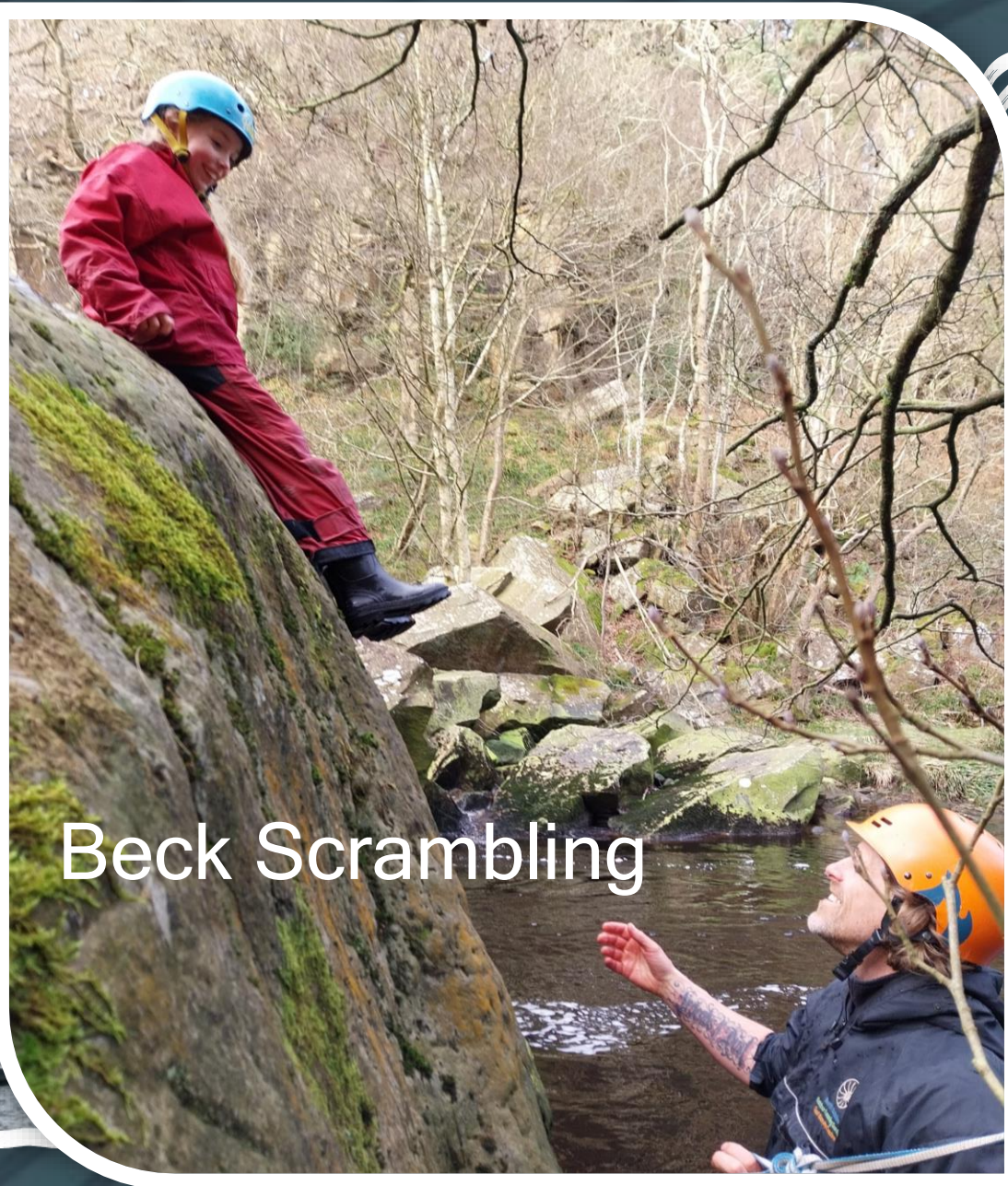
# 📍 What sort of activities can you do?

Mountain walking





What sort



Beck Scrambling



# Body Boarding





What sort of activities can you do?

## Seashore Explore



# 📍 What sort of activities can you do?



Sail & Windsurf






What sort of activities can you do?



# 📍 Do you have to take part?

One of our core values is “Challenge by Choice”



  
Click to  
move on





# The importance of a residential

The residential aspect of your stay holds a huge amount of opportunity too...

Time away from builds independence



Spending time with friends



Getting enough sleep



Being organised



Getting to know new people



less screen-time!



This is all as valuable as the outdoor adventures



Click to move on





# Who's here?

Our exceptional qualified teaching staff have many years experience

Where possible you will have the same teaching staff throughout your course

We ensure our visitors have the best time whilst maintaining safety

We receive great comments and feedback about our staff from participants of all ages



Click to  
move on





# Risk management

Accreditations, licences & qualifications

Everything we do has been risk assessed by highly qualified professionals

We dynamically risk assess throughout each activity to further ensure safety e.g. changing weather, groups needs

Students gain an understanding of risk management

Residual Risk





# Site Security

The centre has security alarmed doors that are controlled by the staff in charge of that dormitory

We have centre duty staff on-call 24hrs

All centre staff wear uniform and are easy to identify

All visitors are required to sign-in and wear ID



Click to  
move on

# What will you eat?

Our on-site catering team provides a range of home cooked meals that will fuel our visitors for their activities

We are skilled at catering for special diets required by medical concerns, culture and religion



Click to  
move on





# Communication



We follow your schools policy on mobile phone use

School staff have 24hr access to our landlines

All our staff carry phones for emergency use

Our office is open daily from 9-4:30



Click to  
move on

# 📍 What do you need to bring?

Old warm clothes for activities - nothing precious!

Drinks bottle

Toiletries and towel


Comfortable clothes for the evenings

Spare socks (more pairs than you think!)

Old trainers for wet activities

Full kit list available on our website



  
Click to  
move on

# How can you prepare?

Get outside; walking in the countryside/beach/park

Spend a night away from home

Find us online



Practice making a bed!

Try some new foods

Try a No-Device day!



Click to move on



# See you soon...

The end!

Thank you for your time today; we can't wait to see you...

Keep up to date via our socials



@nyols



...in the meantime, you can find loads of useful information on our website at...

[www.outdoored.co.uk](http://www.outdoored.co.uk)

